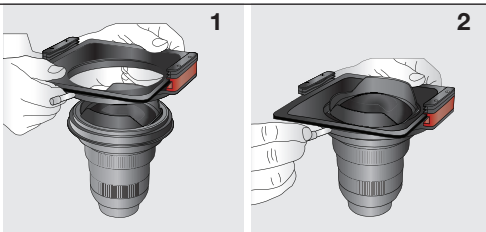
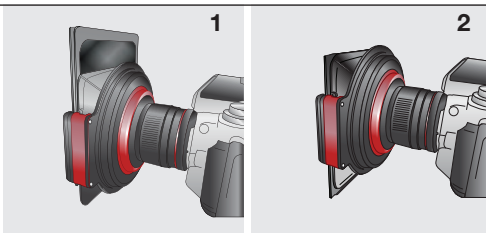


SW150 MkII Filter Holder

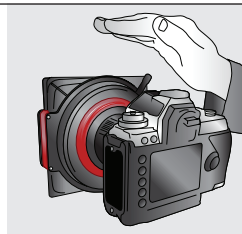
The SW150 MkII Filter Holder slips easily over the Lens Adaptor. Tighten the locking screw to fix the holder firmly in place. Once locked the holder can still be rotated.



The Big & Little Stopper must be placed in the rear filter slot closest to the lens, with the filters foam seal facing the lens. Ensure that the foam around the filter fits up against the Lightshield, this prevents any light getting in behind the filter and causing flare.



If using the holder in bright conditions, we recommend that you shade the holder to avoid any direct sunlight hitting it.



The SW150 holder is now supplied assembled with two filter slots. On some lenses this can cause slight vignetting when the holder is rotated, if this is the case then you can remove one of the slots to give a wider angle of view should this be preferable.

LEE Filters

A PANAVISION COMPANY

leefilters.com